

## 3/8 in. Carbon Steel, Forged 45 Degree Elbow. 3000 lb Rating, Threaded Connection. ANSI B1.201



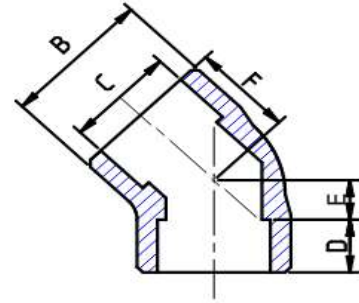
<u>Item No.</u>	M118638	<u>UOM</u>	EA
-----------------	---------	------------	----

[View Product Online to Request Quote](#)

### Specifications

Type	45 Degree Elbow
Size	3/8 in.
Material	Steel
Material Grade	Carbon Steel, Forged
Pressure Class	3000 lb
Connection	Threaded
Specification	ANSI B1.20.1
Market	Commercial

Product URL: <https://torksystems.com/M118638>



### Threaded

CLASS	DIMENSIONS	SIZES (INCHES)											
		1/8	1/4	3/8	1/2	3/4	1	1 1/4	1 1/2	2	2 1/2	3	4
2000	A		3/4	3/4	1	1 1/8	1 1/4	1 5/16	1 3/8	1 3/4	2 1/16	2 1/2	3 1/8
	B		29/32	1 1/16	1 5/16	1 9/16	1 27/32	2 7/32	2 1/2	3 1/32	4	4 3/8	6
	WEIGHT		0.21	0.24	0.47	0.73	1.03	1.46	1.77	3.03	8.07	9.46	24.57
3000	A	3/4	3/4	1	1 1/8	1 1/4	1 5/16	1 3/8	1 11/16	1 3/4	2 1/16	2 1/2	3 1/8
	B	29/32	1 1/16	1 5/16	1 9/16	1 27/32	2 7/32	2 1/2	3 1/32	3 5/16	4	4 3/4	6
	WEIGHT	0.23	0.30	0.58	0.91	1.29	2.02	2.29	4.54	5.26	7.83	12.99	24.75
6000	A	3/4	1	1 1/8	1 1/4	1 5/16	1 3/8	1 11/16	1 3/4	2 1/16	2 1/2	3 1/8	3 1/8
	B	1 1/16	1 5/16	1 9/16	1 27/32	2 7/32	2 1/2	3 1/32	3 5/16	4	4 3/4	6	6
	WEIGHT	0.56	0.58	0.91	1.54	2.25	2.84	5.12	6.82	10.28	15.00	35.20	24.75

### Socket Weld

CLASS	DIMENSIONS	SIZES (INCHES)											
		1/8	1/4	3/8	1/2	3/4	1	1 1/4	1 1/2	2	2 1/2	3	4
3000	A	3/4	3/4	3/4	1	1 1/8	1 1/4	1 5/16	1 3/8	1 3/4	2 1/16	2 1/2	3 1/8
	B	29/32	29/32	1 1/16	1 5/16	1 9/16	1 27/32	2 7/32	2 1/2	3 1/32	4	4 3/8	6
	C	0.420	0.555	0.690	0.855	1.065	1.330	1.675	1.915	2.406	2.906	3.535	4.545
	D MIN.	3/8	3/8	3/8	3/8	1/2	1/2	1/2	1/2	5/8	5/8	5/8	3/4
	E	5/16	5/16	5/16	7/16	1/2	9/16	11/16	13/16	1	1 1/8	1 1/4	1 5/8
	WEIGHT	0.22	0.19	0.22	0.42	0.70	0.95	1.39	1.68	2.96	7.76	8.55	24.06
6000	A	3/4	3/4	1	1 1/8	1 1/4	1 5/16	1 3/8	1 3/4	1 27/32	2 1/16	2 1/2	3 1/8
	B	29/32	1 1/16	1 5/16	1 9/16	1 27/32	2 7/32	2 1/2	3 1/32	3 3/8	4	4 3/4	6
	C	0.420	0.555	0.690	0.855	1.065	1.330	1.675	1.915	2.406	2.906	3.535	4.545
	D MIN.	3/8	3/8	3/8	3/8	1/2	1/2	1/2	1/2	5/8	5/8	5/8	3/4
	E	5/16	5/16	7/16	1/2	9/16	11/16	13/16	1	1 1/8	1 1/4	1 3/8	1 5/8
	WEIGHT		0.22	0.48	0.89	1.26	2.00	2.29	4.49	5.57	8.69	14.20	24.06
9000	A				1 1/4	1 5/16	1 3/8	1 3/4	1 27/32	2 1/16			
	B				1 27/32	2 7/32	2 1/2	3 1/32	3 3/8	4			
	C				0.855	1.065	1.330	1.675	1.915	2.406			
	D MIN.				3/8	1/2	1/2	1/2	1/2	5/8			
	E				5/8	3/4	13/16	7/8	1	1 1/8			
	WEIGHT				1.31	2.37	2.91	4.31	6.89	10.84			