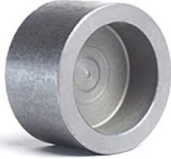


## 3/8 in. Carbon Steel, Forged Cap. 3000 lb Rating, Threaded Connection. ANSI B1.201



---

<u>Item No.</u>	M118870	<u>UOM</u>	EA
-----------------	---------	------------	----

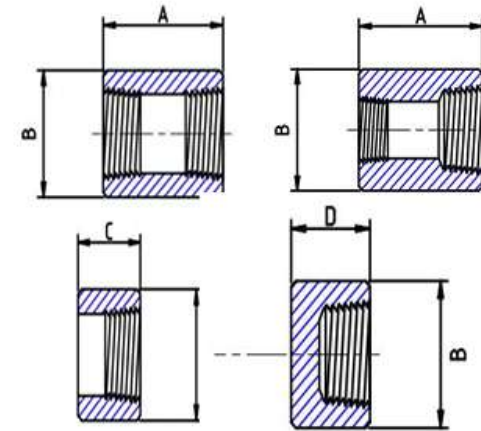
[View Product Online to Request Quote](#)

### Specifications

Type	Cap
Size	3/8 in.
Material	Steel
Material Grade	Carbon Steel, Forged
Pressure Class	3000 lb
Connection	Threaded
Specification	ANSI B1.20.1
Market	Commercial

Product URL: <https://torksystems.com/M118870>

# Forged Steel Fittings TD Threaded Couplings, Reducers, and Caps



## Threaded

CLASS	DIMENSIONS	SIZES (INCHES)											
		1/8	1/4	3/8	1/2	3/4	1	1 1/4	1 1/2	2	2 1/2	3	4
3000	A	1 1/4	1 3/8	1 1/2	1 7/8	2	2 3/8	2 5/8	3 1/8	3 3/8	3 5/8	4 1/4	4 3/4
	B	3/4	3/4	7/8	1 1/8	1 3/8	1 3/4	2 1/4	2 1/2	3	3 5/8	4 1/4	5 1/2
	C	5/8	11/16	3/4	15/16	1	1 3/16	1 5/16	1 9/16	1 11/16	1 13/16	2 1/8	2 3/8
	D	15/16	1	1	1 1/4	1 7/16	1 5/8	1 3/4	1 3/4	1 7/8	2 3/8	2 9/16	2 11/16
COUPLING	WEIGHT	0.13	0.11	0.13	0.29	0.42	0.85	1.60	2.26	2.95	4.61	6.89	12.48
HALF COUPLING	WEIGHT	0.06	0.05	0.06	0.13	0.21	0.42	0.79	1.12	1.53	2.34	3.26	6.48
REDUCER	WEIGHT		0.11	0.13	0.29	0.42	0.85	1.60	2.26	2.95	4.61	6.89	12.48
CAP	WEIGHT	0.10	0.09	0.10	0.24	0.37	0.74	1.35	1.64	2.40	4.45	7.14	12.42
6000	A	1 1/4	1 3/8	1 1/2	1 7/8	2	2 3/8	2 5/8	3 1/8	3 3/8	3 5/8	4 1/4	4 3/4
	B	7/8	1	1 1/4	1 1/2	1 3/4	2 1/4	2 1/2	3	3 5/8	4 1/4	5	6 1/4
	C	5/8	11/16	3/4	15/16	1	1 3/16	1 5/16	1 9/16	1 11/16	1 13/16	2 1/8	2 3/8
	D	1	1 1/16	1 1/16	1 5/16	1 1/2	1 11/16	1 13/16	1 7/8	2	2 1/2	2 11/16	2 15/16
COUPLING	WEIGHT	0.18	0.28	0.39	0.70	0.95	1.93	2.28	4.20	6.00	8.65	13.41	21.86
HALF COUPLING	WEIGHT	0.10	0.12	0.19	0.35	0.49	0.97	1.15	2.08	3.05	4.35	6.83	7.05
REDUCER	WEIGHT		0.28	0.39	0.70	0.95	1.93	2.28	4.20	6.00	8.65	13.41	21.86
CAP	WEIGHT	0.16	0.23	0.31	0.55	0.78	1.55	1.90	2.79	4.35	8.10	10.73	15.58