



**3 x 1-1/2 in. Carbon Steel, Forged
 Coupling. 3000 lb Rating, Socket weld
 Connection, Reducing. ANSI B1611**

<u>Item No.</u>	M119273	<u>UOM</u>	EA
-----------------	---------	------------	----

[View Product Online to Request Quote](#)

Specifications

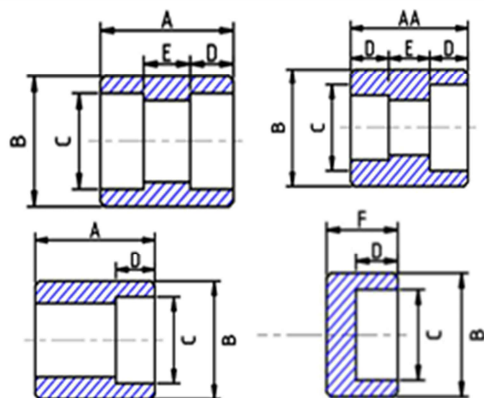
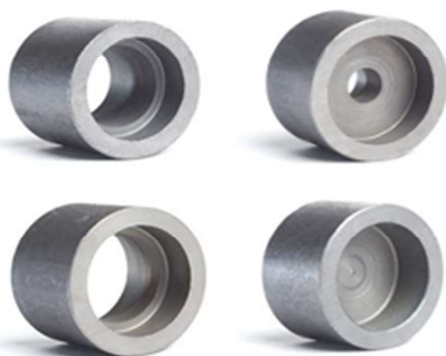
Type	Coupling
Item Remarks	Reducing
Size	3 x 1-1/2 in.
Material	Steel
Material Grade	Carbon Steel, Forged
Pressure Class	3000 lb
Connection	Socket weld
Specification	ANSI B16.11
Market	Commercial

Product URL: <https://torksystems.com/M119273>



Forged Steel Fittings

S/W Couplings, Reducers, and Caps



CLASS	DIMENSIONS	SIZES (INCHES)											
		1/8	1/4	3/8	1/2	3/4	1	1 1/4	1 1/2	2	2 1/2	3	4
Socket Weld													
3000	A	1 1/16	1 1/16	1 1/8	1 3/8	1 1/2	1 3/4	1 7/8	2	2 1/2	2 9/16	2 3/4	3
	AA	1 1/32	1 1/32	1 1/32	1 3/16	1 13/32	1 33/64	1 33/64	1 33/64	2 1/64	2 1/64	2 1/64	2 17/64
	B	3/4	7/8	1 1/16	1 1/4	1 1/2	1 13/16	2 1/4	2 1/2	3	3 5/8	4 5/16	5 1/2
	C	0.420	0.555	0.690	0.855	1.065	1.330	1.675	1.915	2.406	2.906	3.535	4.545
	D MIN.	3/8	3/8	3/8	3/8	1/2	1/2	1/2	1/2	5/8	5/8	5/8	3/4
	E	1/4	1/4	1/4	3/8	3/8	1/2	1/2	1/2	3/4	3/4	3/4	3/4
F	11/16	3/4	3/4	7/8	1	1 1/16	1 3/16	1 1/4	1 1/2	1 9/16	1 13/16	2 1/16	
COUPLING	WEIGHT	0.09	0.12	0.16	0.24	0.39	0.57	0.90	1.04	1.79	2.42	4.06	5.73
HALF COUPLING	WEIGHT	0.10	0.13	0.18	0.32	0.46	0.75	1.24	1.33	2.38	3.55	6.24	8.30
REDUCER	WEIGHT		0.12	0.16	0.24	0.39	0.57	0.90	1.04	1.79	2.42	4.06	5.73
CAP	WEIGHT	0.07	0.10	0.14	0.22	0.36	0.55	1.01	1.27	1.99	3.38	6.30	12.08
6000	A	1 1/16	1 1/16	1 1/8	1 3/8	1 1/2	1 3/4	1 7/8	2	2 1/2	2 9/16	2 3/4	3
	AA	1 1/16	1 1/8	1 1/8	1 5/32	1 13/32	1 33/64	1 33/64	1 33/64	2 1/64	2 1/64	2 1/64	2 17/64
	B	7/8	1 1/16	1 5/16	1 1/2	1 3/4	2 1/4	2 1/2	3	3 5/8	4 1/4	5	6 1/4
	C	0.420	0.555	0.690	0.855	1.065	1.330	1.675	1.915	2.406	2.906	3.535	4.545
	D MIN.	3/8	3/8	3/8	3/8	1/2	1/2	1/2	1/2	5/8	5/8	5/8	3/4
	E	1/4	1/4	1/4	3/8	3/8	1/2	1/2	1/2	3/4	3/4	3/4	3/4
F		15/16	15/16	1	1 1/16	1 1/4	1 5/16	1 3/8	1 5/8	1 11/16	1 15/16	2 5/16	
COUPLING	WEIGHT		0.23	0.33	0.45	0.67	1.27	1.37	2.09	3.85	4.93	6.69	8.00
HALF COUPLING	WEIGHT				0.56	0.80	1.58	1.72	2.99	4.99	5.44	9.50	12.64
REDUCER	WEIGHT		0.23	0.33	0.45	0.67	1.27	1.37	2.09	3.85	4.93	6.69	8.00
CAP	WEIGHT		0.20	0.27	0.42	0.58	1.18	1.41	2.19	3.65	5.83	8.78	14.25
9000	A				1 3/8	1 1/2	1 3/4	1 51/64	2	2 1/2			
	AA				1 3/8	1 1/2	1 3/4	1 51/64	2	2 1/2			
	B				1 13/16	2	2 3/8	2 3/4	3 1/16	3 5/8			
	C				0.855	1.065	1.330	1.675	1.915	2.406			
	D MIN.				3/8	1/2	1/2	1/2	1/2	5/8			
	E				3/8	3/8	1/2	1/2	1/2	3/4			
COUPLING	WEIGHT				0.62	1.04	1.71	1.69	2.93	4.61			
HALF COUPLING	WEIGHT				0.88	0.80	1.74	2.22	2.93	4.99			
REDUCER	WEIGHT				0.62	1.04	1.71	1.69	2.93	4.61			