



1-1/2 in. Bronze Lift Check Valve. Class 150 Rating, Flanged Connection, Bronze Trim. Pima Valve B1627A

<u>Item No.</u>	M101904	<u>UOM</u>	EA
<u>Brand</u>	Pima Valve		
<u>Mfg Part Number</u>	B1627A		

[View Product Online to Request Quote](#)

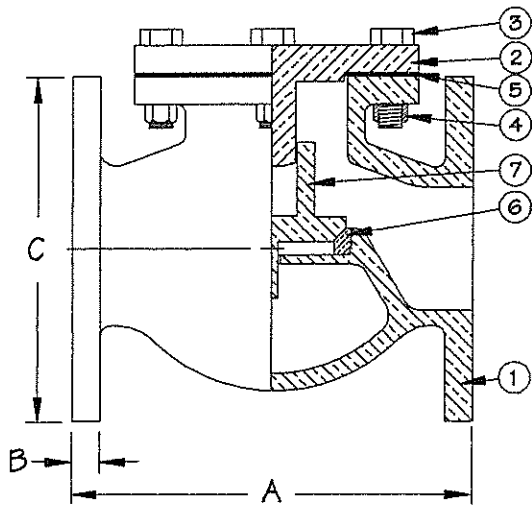
Specifications

Type	Lift Check Valve
Size	1-1/2 in.
Material	Bronze, Brass, Al-Brz
Material Grade	Bronze
Trim	Bronze
Pressure Class	Class 150
Connection	Flanged
Operator	Handwheel
End-to-End	6
Specification	ANSI B16.24
Market	Commercial

Product URL: <https://torksystems.com/M101904>

BRONZE LIFT-CHECK

150 PSI, 1-1/2" - 8"
FLANGED, BRONZE TRIM,
HORIZONTAL LIFT-CHECK
FIGURE NO. B1627A



BILL OF MATERIALS		
PART	MATERIAL	SPEC.
1	BODY	BRONZE ASTM B61 or B62
2	BONNET	BRONZE ASTM B61 or B62
3	BONNET BOLT	SILICON BRONZE ASTM B98
4	BONNET NUT	SILICON BRONZE ASTM B98
5	BONNET GASKET	SYNTHETIC RUBBER MIL-G-1149, CL. 2
6	SEAT RING	BRONZE ASTM B61 or B62
7	DISC	BRONZE ASTM B61 or B62

INTEGRAL SEAT RING UP TO AND INCLUDING THE 4" SIZE.

DIMENSIONS

SIZE	1-1/2	2	2-1/2	3	3-1/2	4	5	6	8
A	6	7	8	9	10 ³ / ₈	11	14	14	19 ¹ / ₂
B	7 16	1 2	9 16	5 8	11 16	11 16	3 4	13 16	15 16
C	5	6	7	7 ¹ / ₂	8 ¹ / ₂	9	10	11	13 ¹ / ₂

