



6 in. Bronze Lift Check Valve. Class 150 Rating, Flanged Connection, Bronze Trim, Angle. Pima Valve B1647A

<u>Item No.</u>	M101948	<u>UOM</u>	EA
<u>Brand</u>	Pima Valve		
<u>Mfg Part Number</u>	B1647A		

[View Product Online to Request Quote](#)

Specifications

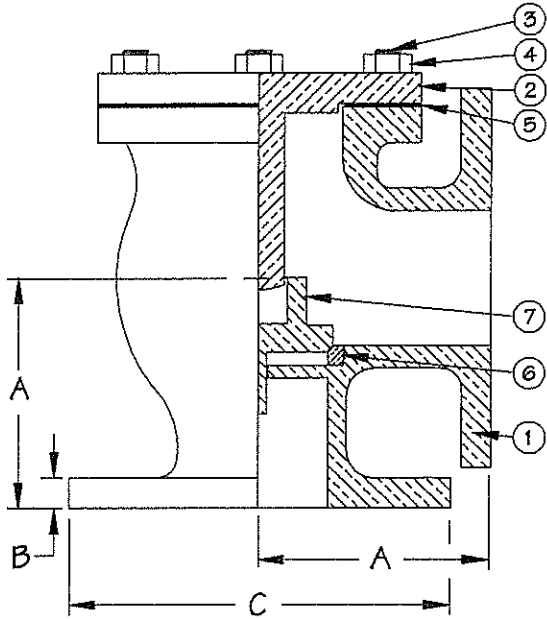
Type	Lift Check Valve
Item Remarks	Angle
Size	6 in.
Material	Bronze, Brass, Al-Brz
Material Grade	Bronze
Trim	Bronze
Pressure Class	Class 150
Connection	Flanged
Operator	Handwheel
End-to-End	7
Specification	ANSI B16.24
Market	Commercial

Product URL: <https://torksystems.com/M101948>

BRONZE LIFT-CHECK

150 PSI, 1-1/2" - 8"
FLANGED, BRONZE TRIM,
VERTICAL LIFT-CHECK

FIGURE NO. B1647A



BILL OF MATERIALS			
PART		MATERIAL	SPEC.
1	BODY	BRONZE	ASTM B61 or B62
2	BONNET	BRONZE	ASTM B61 or B62
3	BONNET STUD	SILICON BRONZE	ASTM B98
4	BONNET NUT	SILICON BRONZE	ASTM B98
5	BONNET GASKET	SYNTHETIC RUBBER	MIL-G-1149, CL. 2
6	SEAT RING	BRONZE	ASTM B61 or B62
7	DISC	BRONZE	ASTM B61 or B62

INTEGRAL SEAT RING UP TO AND INCLUDING THE 4" SIZE.

DIMENSIONS

SIZE	1-1/2	2	2-1/2	3	3-1/2	4	5	6	8
A	3 ¹ / ₈	3 ⁵ / ₈	4 ¹ / ₄	4 ⁵ / ₈	5 ¹ / ₄	5 ¹ / ₂	6 ¹ / ₄	7	9 ³ / ₄
B	7/ ₁₆	1/ ₂	9/ ₁₆	5/ ₈	11/ ₁₆	11/ ₁₆	3/ ₄	13/ ₁₆	15/ ₁₆
C	5	6	7	7 ¹ / ₂	8 ¹ / ₂	9	10	11	13 ¹ / ₂

