



**8 in. Bronze Lift Check Valve. Class 150 Rating, Flanged Connection, Bronze Trim, Angle. Pima Valve B1647A**

<u>Item No.</u>	M101951	<u>UOM</u>	EA
<u>Brand</u>	Pima Valve		
<u>Mfg Part Number</u>	B1647A		

[View Product Online to Request Quote](#)

**Specifications**

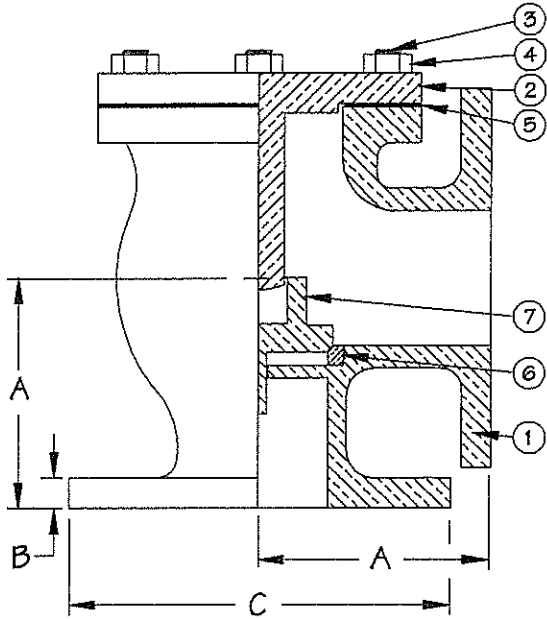
Type	Lift Check Valve
Item Remarks	Angle
Size	8 in.
Material	Bronze, Brass, Al-Brz
Material Grade	Bronze
Trim	Bronze
Pressure Class	Class 150
Connection	Flanged
Operator	Handwheel
End-to-End	9-3/4
Specification	ANSI B16.24
Market	Commercial

Product URL: <https://torksystems.com/M101951>

# BRONZE LIFT-CHECK

150 PSI, 1-1/2" - 8"  
FLANGED, BRONZE TRIM,  
VERTICAL LIFT-CHECK

FIGURE NO. B1647A



BILL OF MATERIALS			
PART		MATERIAL	SPEC.
1	BODY	BRONZE	ASTM B61 or B62
2	BONNET	BRONZE	ASTM B61 or B62
3	BONNET STUD	SILICON BRONZE	ASTM B98
4	BONNET NUT	SILICON BRONZE	ASTM B98
5	BONNET GASKET	SYNTHETIC RUBBER	MIL-G-1149, CL. 2
6	SEAT RING	BRONZE	ASTM B61 or B62
7	DISC	BRONZE	ASTM B61 or B62

INTEGRAL SEAT RING UP TO AND INCLUDING THE 4" SIZE.

## DIMENSIONS

SIZE	1-1/2	2	2-1/2	3	3-1/2	4	5	6	8
A	$3\frac{1}{8}$	$3\frac{5}{8}$	$4\frac{1}{4}$	$4\frac{5}{8}$	$5\frac{1}{4}$	$5\frac{1}{2}$	$6\frac{1}{4}$	7	$9\frac{3}{4}$
B	$\frac{7}{16}$	$\frac{1}{2}$	$\frac{9}{16}$	$\frac{5}{8}$	$\frac{11}{16}$	$\frac{11}{16}$	$\frac{3}{4}$	$\frac{13}{16}$	$\frac{15}{16}$
C	5	6	7	$7\frac{1}{2}$	$8\frac{1}{2}$	9	10	11	$13\frac{1}{2}$

